



What goes in the Red Bin?



Plastics Bags and small Items



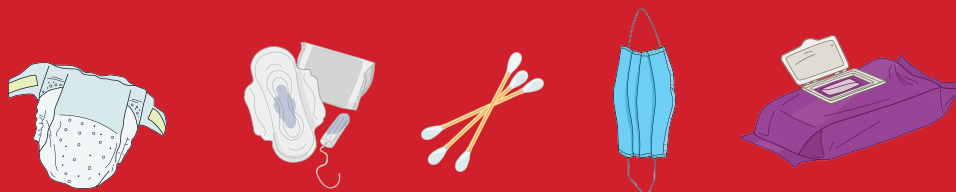
Broken Household Items



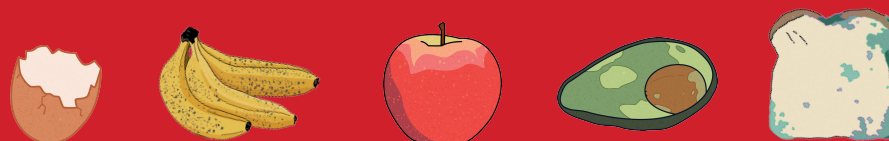
Clothing & Shoes



Nappies & Hygiene Items



Food and Garden Waste: If you don't compost at home, please dispose of your food and green waste in the red bin.



REMEMBER

Don't bin your used batteries!



What goes in the Red bin?

Plastic bags and small items

Plastic bags, bagged material, soft plastics and films, styrofoam (EPS packaging, bean bag beans, etc), food, organics, grass clippings, animal waste, soft plastics including plastic bags or plastic packaging.

Broken household items

Electrical and electronic goods, appliances, furniture, cables, hoses, rope, netting, biodegradable cups and plates, plastic toys, drinking glasses, glass cookware, lightbulbs, windows or mirrors.

Clothing & shoes

Clothing, textiles, shoes.

Nappies & hygiene items

Nappies, shredded paper, tissues and paper towels.

Metals

Scrap metal, paint tins, aluminium saucepans, aluminium window frames.

Food

Leftover or spoiled food that cannot be composted or placed in organic bins (if available), meat and bones (if not processed through a specific organic recycling program), dairy products like cheese or yogurt, seafood waste, such as shells or fish remains, processed food scraps like bread, pasta, or pastries that cannot go into green bins.