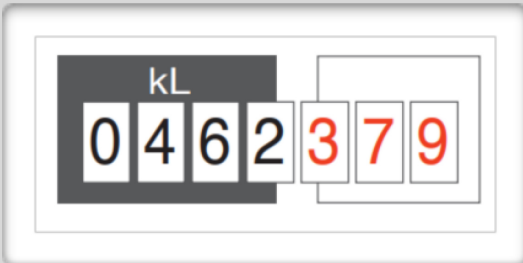


How Is Water Use Measured?

All properties connected to Council's water supply have their water use measured by a water meter that measures consumption in kilolitres (1 Kilolitre = 1000 litres).

You Can Monitor Your Own Usage

You may wish to read your own water meter to monitor usage using the table provided below. Most water users will have a meter with a dial face like shown in the below diagram example.



Here's An Example

In the meter reading display shown, the reading is taken from the black digits. This meter reads 462.379 which is the total number of kilolitres of water recorded since the meter was installed.

Our charge is based on units of one kilolitre, therefore the litres (the red digits) are not recorded, and this reading would actually be documented as 462kL.

Continuing with the example; if by the next time you read your meter and you had used 200kL of water, the new reading would show 662.379 (462.379 + 200). Again, the red digits are disregarded and your official reading would be 662kL.

Why Should I Read My Water Meter?

Regularly reading your water meter will help you track your usage and quickly identify leaks either inside your home or underground.

Monitor your usage

Meter Number:

Date of Reading	Previous Meter Reading	Current Meter Reading	Water Usage	Days Between Readings	Average Daily Consumption

How can I monitor my water consumption?

A courtesy letter will be issued showing your property's total consumption for the 2017-2018 billing period. This letter will also stipulate the meter size(s) on your property.

Meters will be read half-yearly. Ratepayers will receive a water notice which will detail water consumption for the previous six months and the applicable charges.

How do I check my daily water use?

Take a reading from your water meter, noting the day and time you took the reading.

Two weeks later take another reading from your water meter on the same day of the week and the same time as the previous reading.

Subtract the second reading from your first reading.

Divide the result by the number of days between your readings to get your average daily usage.

Please see an example as shown in table below:

Date & Time	Meter Reading	Consumption	Average Daily Consumption
27.02.2018 at 9am	8760 kl	8791 - 8760 = 31 kl	31 kl / 14 days = 2.21kl per day
13.03.2018 at 9am	8791 kl		

Example for Camooweal and body corporate properties

	kL Water Used
Camooweal/Body Corporate	700
Charge per kL	\$0.87
Cost of Water Notice	\$609.00

Example for Mount Isa properties

	Cost Per kL	kL Water Used	Amount (\$)
Mount Isa		750	
0kL - 950kL	\$0.87	750	\$652.50
951kL - 2,000kL	\$3.00	0	0
2,001kL +	\$4.00	0	0
Total		750	\$652.50