

IsaMaps Introductory Lesson

1. TRAINING OUTCOME

To learn how to access mapping information at your desk, laptop, mobile phone, tablet device or on an iPad.

1.1 How to Access the Portal

You can access maps through Council’s Homepage “IsaMaps” or direct link: <https://www.mountisa.qld.gov.au/maps>.

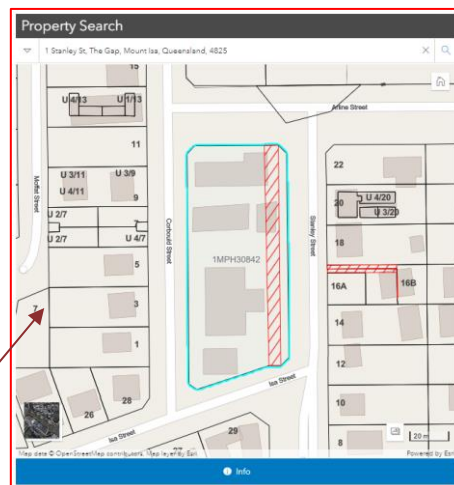
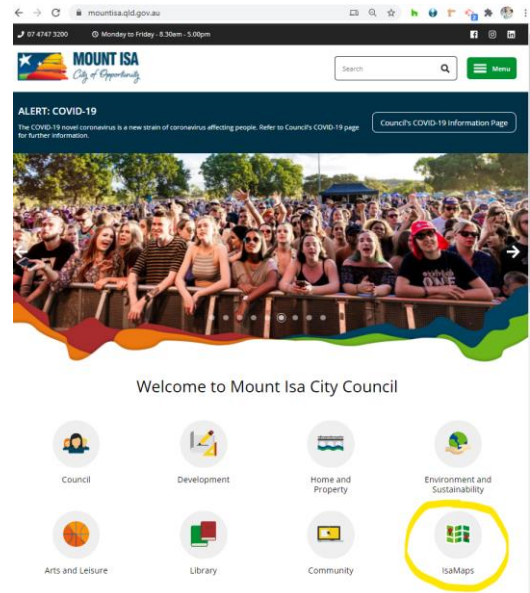
1.2 Property Information

Type an address, assessment, lot on plan into the Property Search to get publically available information such as bin days, tenure, assessment, lot on plan, registered address, planning overlays and planning zones

Infrastructure Services

Internal Hyperlinks

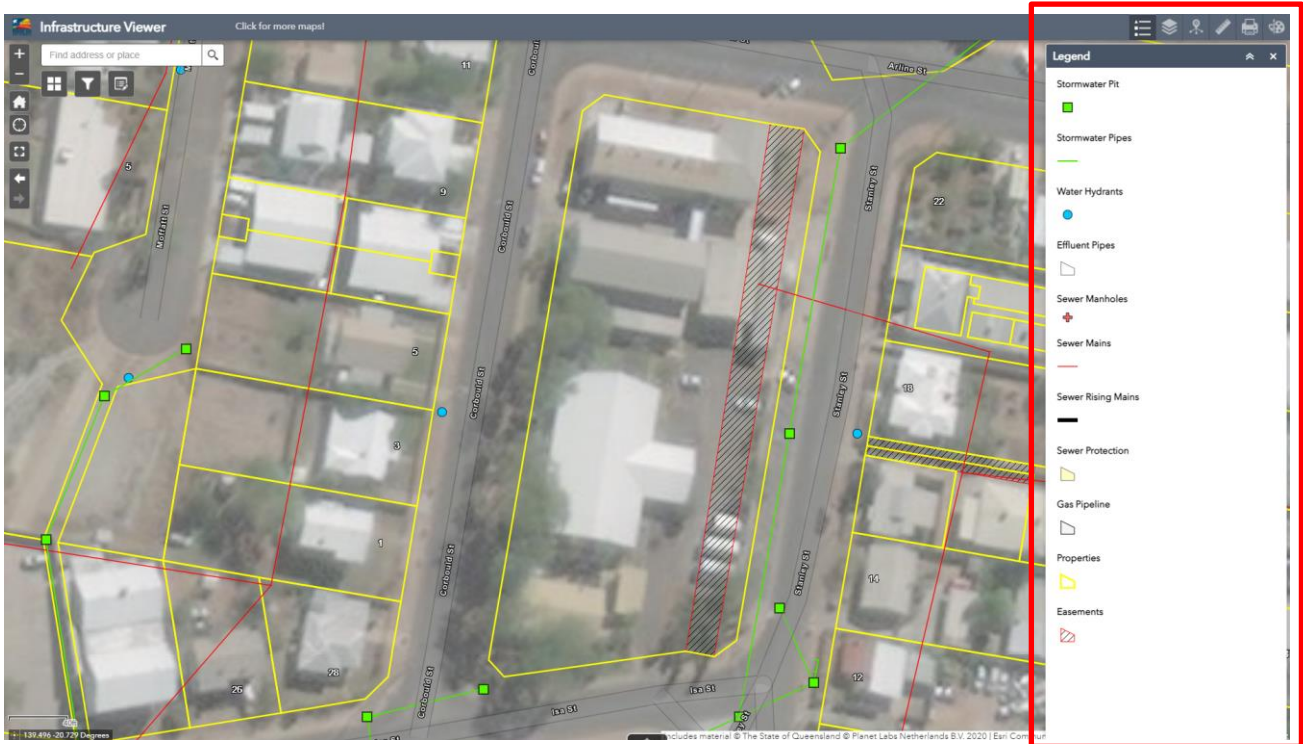
- Internal Explorer
- Sewerage Asset Custodian
- Water Asset Custodian
- Waste Asset Custodian



Click Map to swap to the “Map View”, right click to rotate the map if you wish. When you’ve found the property you were looking for, press the “View on Plumbing Explorer” link



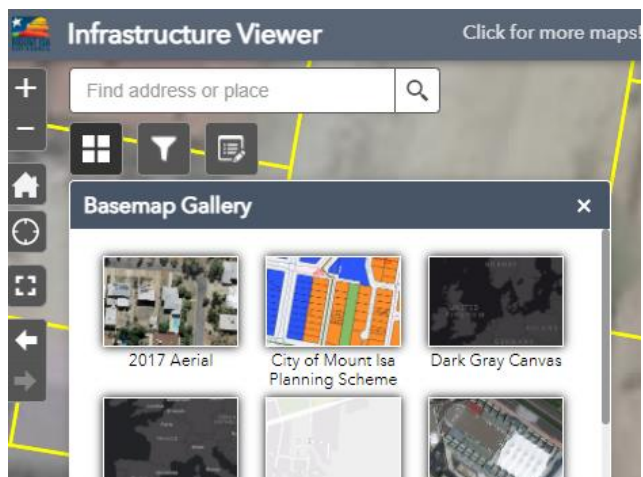
Use the icons on the right-hand side to access the **Legend, Ruler, Print and Drawing Tools**:



- Legend describes what the dots and lines all mean
- Layers to turn pipes / boundaries on or off
- Info Summary shows what's in view and a quick summary of the assets
- Measurement lets you measure building footprints and distances between services and fences
- Print lets you print what you see (you might need to zoom in and around to ensure you can see the whole area of interest and change scale bar settings to meters)
- Draw lets you annotate on the map. I find that Microsoft Word or Publisher works better if you need flexibility.
- Click things on the map to get popups on what they are.

Use the icons on the left-hand side to access **Basemaps, Filters and Edit** tools

I also encourage you to check out [Queensland Globe](https://qldglobe.information.qld.gov.au/) for more datasets which you can load into the online map! <https://qldglobe.information.qld.gov.au/>



This is the end of your Introductory Lesson